

TECHNICAL DATA

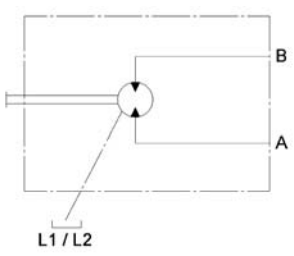
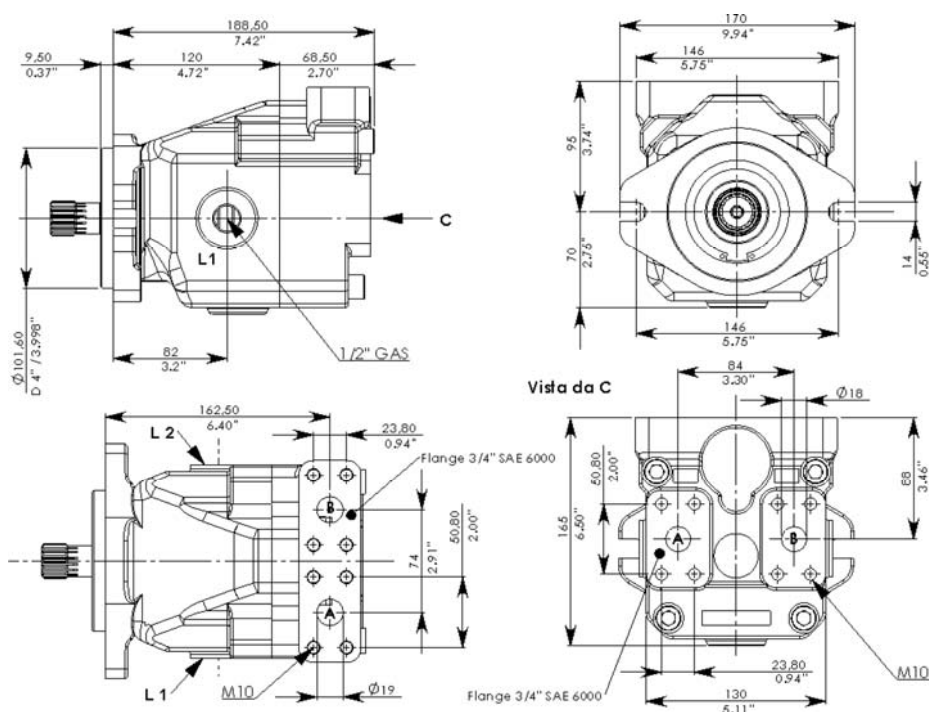
Displacement	cm ³ /rev	34	46	50	64
Max. continuous speed	rpm	3600			
Max. intermittent speed	rpm	3800			
Rated pressure	bar	250			
Peak pressure	bar	400			
Max. case drain pressure	bar	1,5			
Rotating parts moment of inertia	kg m ²	0,0060			0,0059
Oil operating temperature	°C	-25 ÷ 80			
Viscosity range at operating temperature	cSt	15 ÷ 35			
Max. permissible contamination level in circuit		ISO 18/16/13, NAS 8			
Connection flange		SAE B			
Approx. weight	kg	13			

Fixed displacement axial piston motors feature a swash plate system and may operate in either closed or open circuit. Proper selection of materials and the use of steel cylinder blocks with inserted bushings guarantee the high performance of Lutz-Hydraulik motors, in terms of max. speed and working pressure.

Main features of Lutz-Hydraulik motors include:

- ☐ Exceptionally high power/weight ratio
- ☐ Excellent volumetric and mechanical efficiency
- ☐ Long life
- ☐ Compact design
- ☐ Exchange valve fitted as optional.

DRAWINGS



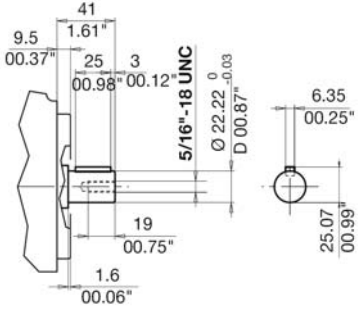
Oil outlet port		A	B
Shaft rotation		CW	CCW

Ports		SAE O-Ring	M
A B	Pressure	1 1/16" 12 UN	3/4" G
	Drain	1 1/16" 12 UN	3/4" G

SHAFTS

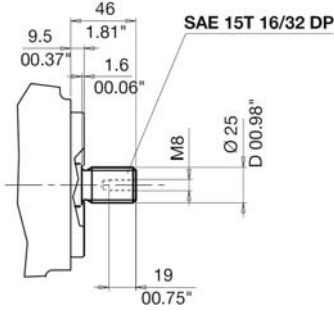
Cylindrical \varnothing 22,22 mm (7/8")

C22



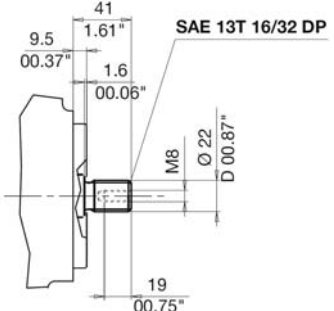
Splined 15 teeth 16/32 pitch

15



Splined 13 teeth 16/32 pitch

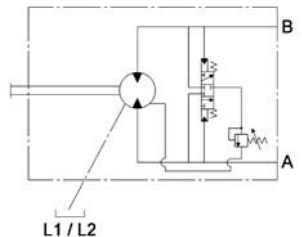
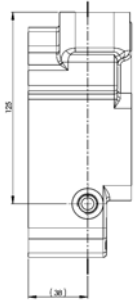
13



OPTIONS

Exchange valve (5/7 L/min)

V



MODEL CODE

A M L _ _ _ _ (_) _ _ _ _ _
 1 2 3 4 5 6

1. SERIES

AML

2. DISPLACEMENT

34 cm ³ /rev	34
46 cm ³ /rev	46
50 cm ³ /rev	50
64 cm ³ /rev	64

3. PRESSURE PORTS (A, B)

Rear	R
Side	S

4. ROTATION DIRECTION

Bidirectional	B
---------------	---

5. SHAFT END

Cylindrical ø 22,22 mm (7/8")	C22
Splined 15 teeth 16/32 pitch	15
Splined 13 teeth 16/32 pitch	13

6. OPTIONS – more than one can be chosen

No options	N
Rear drain ports	R
BSP threads	M
Exchange valve	V

EXAMPLE

AML50 R B 15 V