

WX

SERIES

WHEELED EXCAVATORS

WX240 INDUSTRIAL
VERSION

CASE



HYDRAULICALLY LIFTING DELUXE CAB

The cab can be lifted hydraulically by up to 5.6 m and, because of an articulated parallelogram design, stopped at any intermediate height, thus giving maximum visibility of working area.

In addition it has been designed with operator comfort in mind: spacious, noise insulated, with an outstanding all-round and upward visibility. Additional options, offered on request: fixed height cab, in two configurations:

- height increase = 800 mm
- height increase = 1300 mm

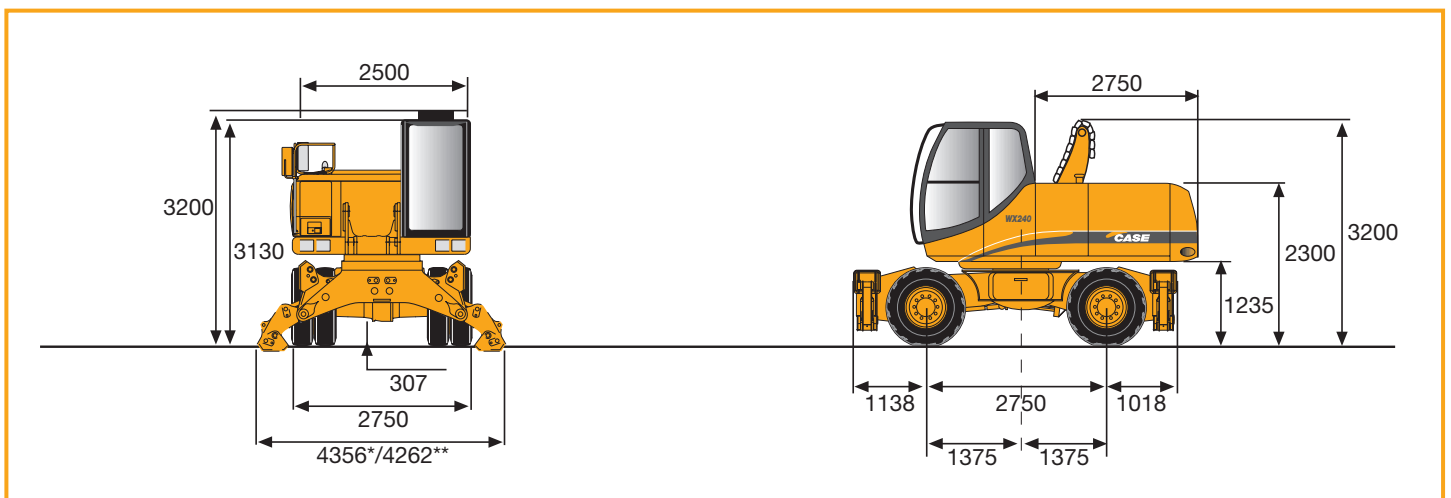
HEAVY DUTY UNDERCARRIAGE

The robust, torsion free undercarriage is robot-welded and offers the optimum support to the stabilisers thus giving the machine maximum stability in all working positions.

EFFICIENT HYDRAULIC SYSTEM

An intelligent electronic control and monitoring system of the three hydraulic pumps ensures 100% utilisation of the engine output at all times, without the possibility of overload.

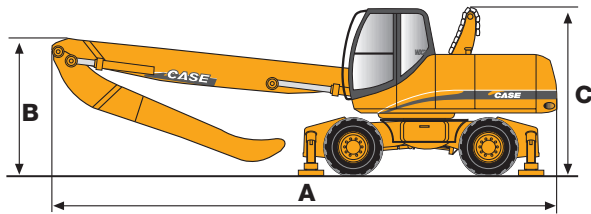
MAIN DIMENSIONS



* Stabilisers at ground level

** Machine fully raised

TRANSPORT DIMENSIONS



BOOM 6.80 m

**DIPPER
5.20 m**

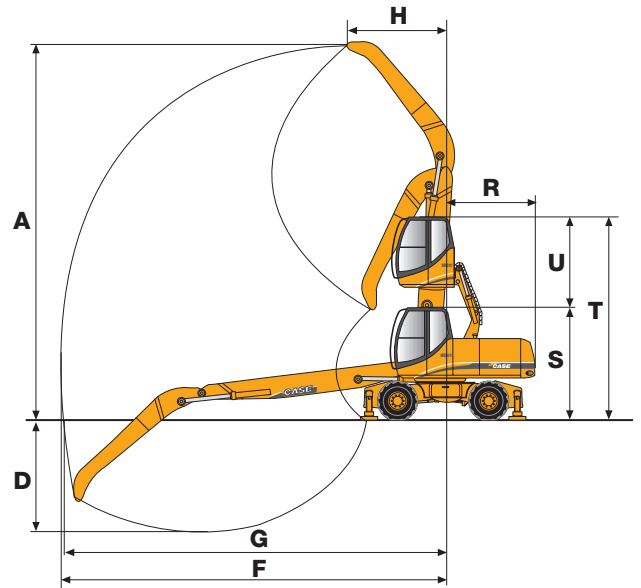
A Overall length of excavator	mm	10036
B Height to top of boom	mm	3200
C Height to top of lifting cab linkage	mm	3200

WORKING RANGE

BOOM 6.80 m

**DIPPER
5.20 m**

A Max. height	m	13.00
H Max. front swing radius	m	2.80
D Max. depth	m	4.30
F Max. reach	m	11.80
G Max. reach at ground level	m	11.70
R Rear swing radius	m	2.75
S Cab height	m	3.13
T Max. lifted cab height	m	5.60
U Cab height increase	m	2.47



LIFTING CAPACITY

STANDARD UNDERCARRIAGE 2.75 m

P4A down - DIPPERSTICK 5.20 m

Height	Reach												At max reach		
	3.5		4.5 m		6.0 m		7.5 m		9.5		10.5		Front	360°	Max reach
9.0 m					8.3*	8.3*	7.0*	7.0*	4.5*	4.5*			3.8*	3.8*	9.3
7.5 m					8.4*	8.4*	7.2*	7.2*	6.3*	5.8			3.6*	3.6*	10.3
6.0 m			10.7*	10.7*	8.7*	8.7*	7.3*	7.3*	6.3*	5.8	5.1*	4.5	3.5*	3.5*	11.0
4.5 m			11.9*	11.9*	9.2*	9.2*	7.6*	7.6	6.4*	5.6	5.2	4.4	3.6*	3.6*	11.5
3.0 m	20.9*	20.9*	13.3*	13.3*	9.8*	9.8*	7.8*	7.3	6.4*	5.5	5.1	4.3	3.7*	3.6	11.8
1.5 m			13.9*	13.9*	10.0*	9.9	7.8*	7.0	6.2	5.3	5.0	4.2	3.9*	3.6	11.8
0.0 m	4.6*	4.6*	11.9*	11.9*	9.6*	9.4	7.4*	6.8	5.9*	5.2	4.6*	4.2	3.4*	3.4*	11.7
-1.5 m	5.4*	5.4*	9.9*	9.9*	8.4*	8.4*	6.6*	6.6	5.1*	5.1	3.8*	3.8*	2.9*	2.9*	11.3
-3.0 m			7.7*	7.7*	6.5*	6.5*	5.2*	5.2*	3.9*	3.9*	2.5*	2.5*			

- Lift capacities are taken in accordance with SAE J 1097/ISO 10567/DIN 15019-2.
- Lift capacities shown in tons do not exceed 75% of the tipping load or 87% of the hydraulic lift capacity.

P2AL down - DIPPERSTICK 5.20 m

Height	Reach												At max reach		
	3.5		4.5 m		6.0 m		7.5 m		9.5		10.5		Front	360°	Max reach
9.0 m					8.3*	8.3*	7.0*	6.3	4.5*	4.5*			3.8*	3.8*	9.3
7.5 m					8.4*	8.4*	7.2*	6.3	6.3*	4.6			3.6*	3.6*	10.3
6.0 m			10.7*	10.7*	8.7*	8.7*	7.3*	6.2	6.3*	4.6	5.1*	3.5	3.5*	3.2	11.0
4.5 m			11.9*	11.9*	9.2*	8.5	7.6*	6.0	6.4*	4.5	5.3	3.5	3.6*	3.0	11.5
3.0 m	20.9*	20.9*	13.3*	12.8	9.8*	8.0	7.8*	5.7	6.4*	4.3	5.2	3.4	3.7*	2.8	11.8
1.5 m			13.9*	11.7	10.0*	7.5	7.8*	5.4	6.2*	4.2	5.0*	3.3	3.9*	2.8	11.8
0.0 m	4.6*	4.6*	11.9*	11.0	9.6*	7.1	7.4*	5.2	5.9*	4.0	4.6*	3.2	3.4*	2.8	11.7
-1.5 m	5.4*	5.4*	9.9*	9.9*	8.4*	6.9	6.6*	5.1	5.1*	3.9	3.8*	3.2	2.9*	2.9*	11.3
-3.0 m			7.7*	7.7*	6.5*	6.5*	5.2*	5.0	3.9*	3.9	2.5*	2.5*			

- Capacities that are marked with an asterisk are hydraulic limited.
- The machine must be parked on firm, level ground, with stabilisers and/or blade on the ground.

WORLDWIDE CASE CONSTRUCTION EQUIPMENT CONTACT INFORMATION

EUROPE/AFRICA/MIDDLE EAST:

CENTRE D'AFFAIRES EGB
5, AVENUE GEORGES BATAILLE - BP 40401
60671 PLESSIS BELLEVILLE - FRANCE

NORTH AMERICA/MEXICO:

700 STATE STREET
RACINE - WI 53404 U.S.A.

LATIN AMERICA:

AV. GENERAL DAVID SARNOFF 2237
32210 - 900 CONTAGEM - MG
BELO HORIZONTE - BRAZIL

ASIA PACIFIC:

UNIT 1 - 1 FOUNDATION PLACE - PROSPECT
NEW SOUTH WALES - 2148 AUSTRALIA

CHINA:

No. 29, INDUSTRIAL PREMISES, No. 376,
DE BAO ROAD, WAIGAOQIAO FTZ, PUDONG,
SHANGHAI - 200131 P.R.C.

NOTE: Standard and optional fittings can vary according to the demands and specific regulations of each country. The illustrations may include optional rather than standard fittings - consult your Case dealer. Furthermore, CNH reserves the right to modify machine specifications without incurring any obligation relating to such changes.

CNH UK Ltd.
Armstrong House
The Finningley Estate
Hayfield Lane
Doncaster
DN9 3XA
Fax +44 (0)1302 802126

Conforms to directive 98/37/CE



www.casece.com

CASE
PROFESSIONAL PARTNER