

TX SERIES

CASE

TELESCOPIC HANDLERS

TX130-30 / TX130-33 / TX130-40 / TX130-43
TX130-45 / TX140-43 / TX140-45 / TX170-45



P R O F E S S I O N A L P A R T N E R

TELESCOPIC

THE ULTIMATE

SAFE LOAD PLACEMENT

The choice of stabiliser system and hydraulic frame levelling are supplemented with audible and visual warnings to ensure safe load placement of heavy loads at full height or reach.



OUTSTANDING STABILITY

The extraordinary stability of CASE Telescopic Handlers is enhanced by the extra long wheel base (one of the best in the market), the overdimensioned counterweight and by the low centre of gravity and low boom fitting point which, at the same time, dramatically improves visibility to the rear.

IMPRESSIVE LIFT HEIGHT

Up to 17 metres on the TX170-45.

The strong boom construction, with excellent overlap between the telescopic sections, ensures excellent load distribution whilst reducing component stress.



HANDLERS

RANGE EXTENSION

Packed with features to ensure safe, productive operation, these dedicated construction equipment machines respond with ease to the toughest construction and materials handling applications.

SUPERB OPERATOR COMFORT

The spacious cab offers the best visibility currently available on the market. Its rounded front profile and large glass area give the operator total control both with the boom fully raised and in restricted working spaces.

STANDARD PILOT CONTROL

Easy to use control lever which operates all hydraulic functions.



OUTSTANDING MANOEUVRABILITY

Thanks to a choice of three steering modes - 2-wheel, 4-wheel or crab steer, TX offer outstanding manoeuvrability. With a turning radius of just 3.89 m, even the most restricted job sites pose no problem.



CNH TURBO 4.5 I engine
The longitudinal engine mount ensures easy service.



The "Load Sensing - Flow Sharing" hydraulic system grants totally independent movements. The rear-mounted control/valve is fully accessible without the need to move other components.



Cab door opens to 180° and secures at the fully open position. The door is constructed in two sections to enable the upper section to be opened independently.

PERFORMANCE

Maximum lift capacity (at 500 mm from fork heel)	kg
Maximum lift height	m
Lift capacity at maximum reach	kg
Lift capacity at maximum lift height	kg
Reach fully raised	m
Maximum forward reach	m
Height with max load (3000/3300 kg)	m
Breakout force	daN
Operating weight	kg

	TX130-30	TX130-33
	with stab. up	with stab. down
Maximum lift capacity (at 500 mm from fork heel)	3000	3300
Maximum lift height	12.7	13.0
Lift capacity at maximum reach	400	1150
Lift capacity at maximum lift height	1500	2500
Reach fully raised	2.00	1.00
Maximum forward reach	8.75	8.75
Height with max load (3000/3300 kg)	6.80	8.40
Breakout force	7750	7750
Operating weight	9550	9900

ENGINE

Make CNH and model (optional)	
Type	
Total displacement	l
Net flywheel power (ISO 14396)	kW/hp
Maximum torque	Nm

4NA 4.5*	4TC 4.5*
Natural aspiration	Turbo
4.5	
60/80	71/95
320 @ 1400 rpm	400 @ 1400 rpm

* The two engines may be mounted upon request on both machines

TRANSMISSION

Type	
Forward/Reverse speeds	
Maximum speed on road**	km/h

PowerShift	
4/3	
28	34

** Max. speed limited according to the country's legislations

HYDRAULIC SYSTEM

Type	
Hydraulic controls	
Simultaneous movement	
Hydraulic pump	
Hydraulic flow	l/min
Hydraulic pressure	bar

Load Sensing	
Servo	
yes	
gear	
115	
240	

CAPACITIES

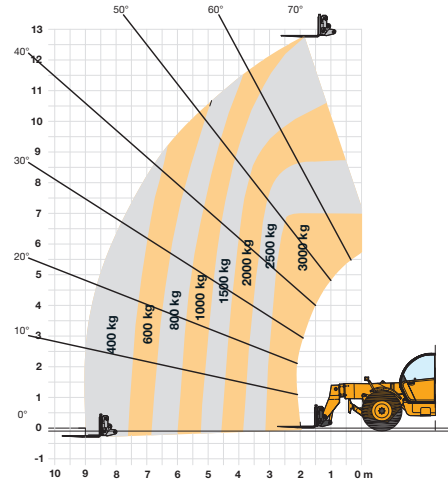
Fuel tank	l
Hydraulic tank	l

135	
180	

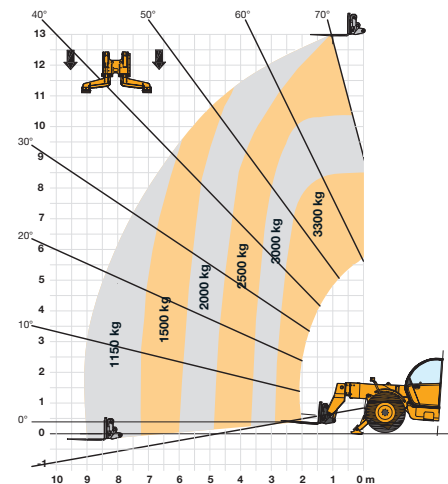
TYRES

15.5 x 22.5	MICHELIN
400/80 x 20	SOLIDEAL
400/80 x 24	DUNLOP
400/70 x 20	MITAS

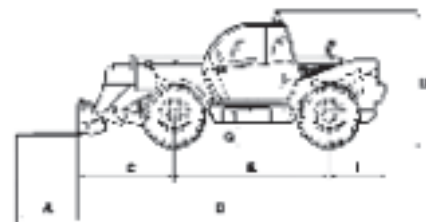
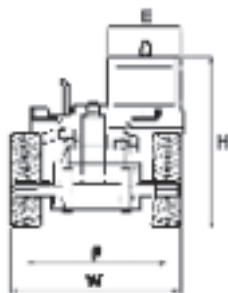
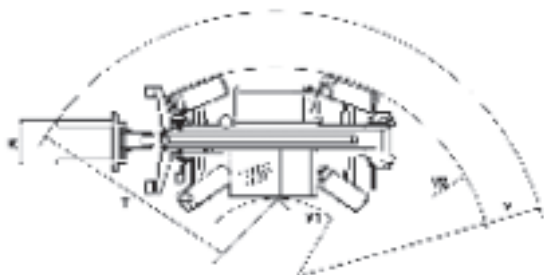
TX130-30



TX130-33



EN 1459/B



DIMENSIONS

With 24" rims
With 20" rims

A	B	C	D	E	F	G	H	I	K	T	U	V	V ₁	V ₂	W
1200	3120	1730	5900	1000	2050	402	2450	1050	1260	4600	2730	5445	980	3890	2445
1200	3120	1730	5900	1000	2040	390	2435	1050	1260	4600	2715	5445	980	3890	2445

PERFORMANCE

	TX130-40 without stab.	TX 130-43 with small stab.	TX130-45 with large stab.
Maximum lift capacity (at 500 mm from fork heel)	kg 4000	4300	4500
Maximum lift height	m 12.30	12.45	12.45
Lift capacity at maximum reach	kg 700	1700	1800
Lift capacity at maximum lift height	kg 2000/2600*	3600	4000
Reach fully raised	m 1.20	0.50	0.00
Maximum forward reach	m 8.65	8.65	8.65
Height with max load (4000/4500 kg)	m 8.50/9.50*	8.30	8.20
Breakout force	daN 7750	7750	7750
Operating weight	kg 10200	10400	10630

*Machine with stabilizers up

ENGINE

Make CNH and model	4TAA 4.5
Type	Turbo/intercooler
Total displacement	l 4.5
Net flywheel power (ISO 14396)	kW/hp 82/110
Maximum torque	Nm 480 @ 1400 rpm

TRANSMISSION

Type	PowerShift
Forward/Reverse speeds	4/3
Maximum speed on road**	km/h 35

** Max. speed limited according to the country's legislations

HYDRAULIC SYSTEM

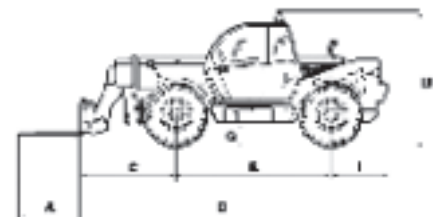
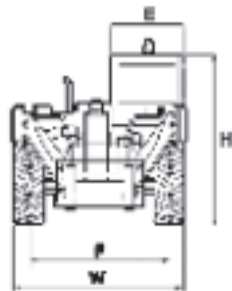
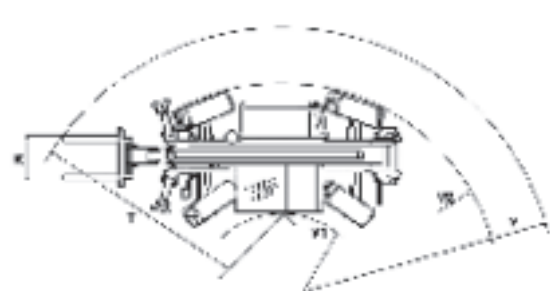
Type	Load Sensing
Hydraulic controls	Servo
Simultaneous movement	yes
Hydraulic pump	gear
Hydraulic flow	l/min 115
Hydraulic pressure	bar 240

CAPACITIES

Fuel tank	l 135
Hydraulic tank	l 180

TYRES

13.00 x 24	GOOD-YEAR
15.5 x 25	MICHELIN
405/70 x 24	MITAS
400/80 x 24	DUNLOP

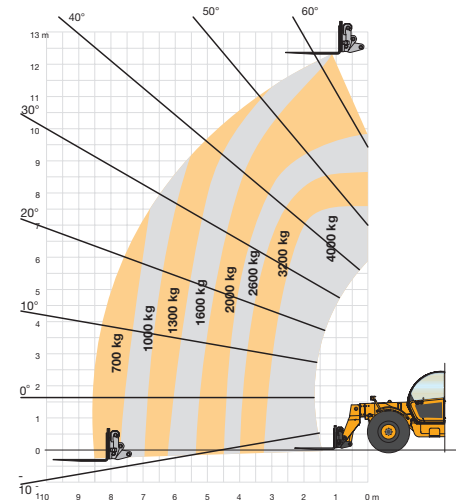


DIMENSIONS

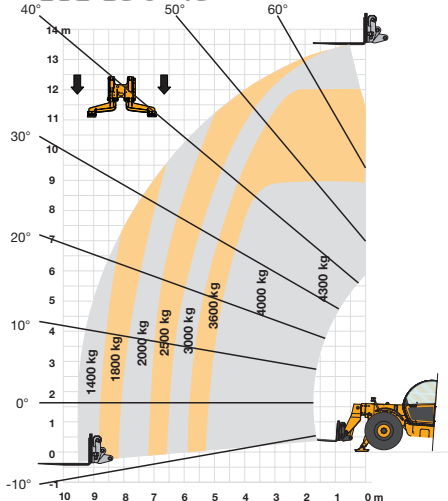
(with MITAS 405/70x24)

mm	A	B	C	D	E	F	G	H	I	K	T	U	V	V ₁	V ₂	W
	1200	3120	1617	5850	1000	2050	402	2450	1100	1260	4396	2730	5204	980	3890	2445

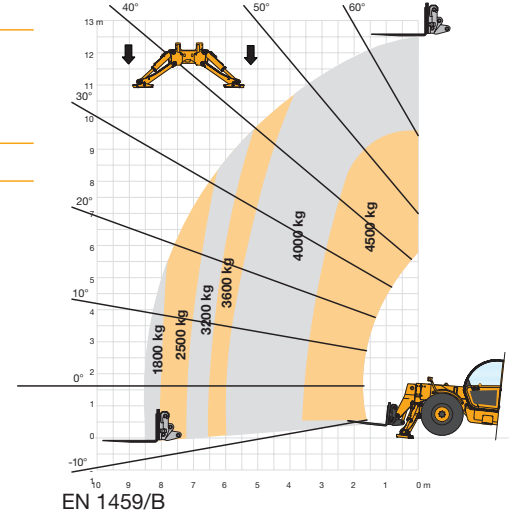
TX130-40



TX 130-43



TX130-45



PERFORMANCE

Maximum lift capacity (at 500 mm from fork heel)	kg
Maximum lift height	m
Lift capacity at maximum reach	kg
Lift capacity at maximum lift height	kg
Reach fully raised	m
Maximum forward reach	m
Height with max load (4300/4500 kg)	m
Breakout force	daN
Operating weight	kg

TX140-43

with small stab.

Maximum lift capacity (at 500 mm from fork heel)	kg
Maximum lift height	m
Lift capacity at maximum reach	kg
Lift capacity at maximum lift height	kg
Reach fully raised	m
Maximum forward reach	m
Height with max load (4300/4500 kg)	m
Breakout force	daN
Operating weight	kg

TX140-45

with large stab.

Maximum lift capacity (at 500 mm from fork heel)	kg
Maximum lift height	m
Lift capacity at maximum reach	kg
Lift capacity at maximum lift height	kg
Reach fully raised	m
Maximum forward reach	m
Height with max load (4300/4500 kg)	m
Breakout force	daN
Operating weight	kg

* Machine with stabilizers up

ENGINE

Make	CNH and model
Type	
Total displacement	l
Net flywheel power (ISO 14396)	kW/hp
Maximum torque	Nm

4TAA 4.5

Turbo/intercooler

4.5

82/110

480 @ 1400 rpm

TRANSMISSION

Type	
Forward/Reverse speeds	
Maximum speed on road**	km/h

PowerShift

4/3

35

** Max. speed limited according to the country's legislations

HYDRAULIC SYSTEM

Type	
Hydraulic controls	
Simultaneous movement	
Hydraulic pump	
Hydraulic flow	l/min
Hydraulic pressure	bar

Load Sensing

Servo

yes

gear

115

240

CAPACITIES

Fuel tank	l
Hydraulic tank	l

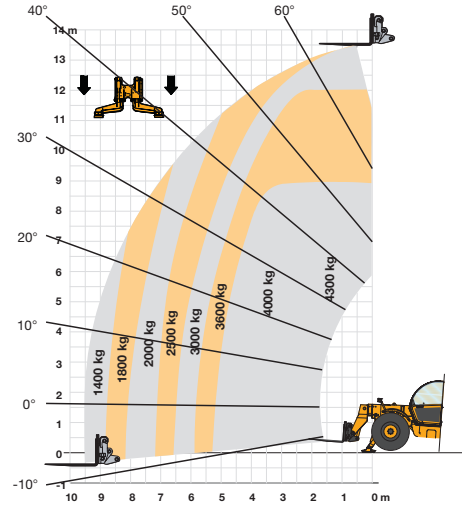
135

180

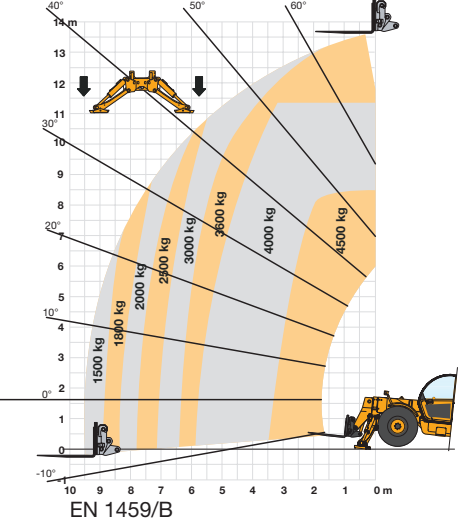
TYRES

13.00 x 24	GOOD-YEAR
15.5 x 25	MICHELIN
405/70 x 24	MITAS
400/80 x 24	DUNLOP

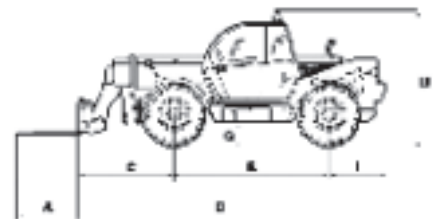
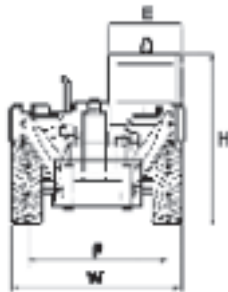
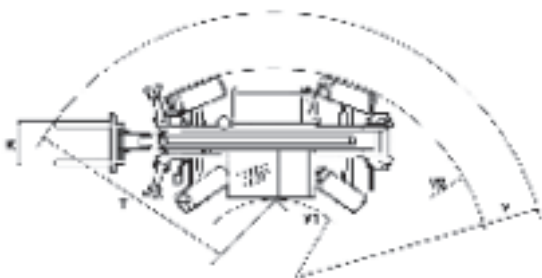
TX140-43



TX140-45



EN 1459/B



DIMENSIONS

(with MITAS 405/70x24)

mm

A	B	C	D	E	F	G	H	I	K	T	U	V	V ₁	V ₂	W
1200	3120	1617	5850	1000	2050	402	2450	1100	1260	4552	2730	5390	980	3890	2445

PERFORMANCE

Maximum lift capacity (at 500 mm from fork heel)	kg
Maximum lift height	m
Lift capacity at maximum reach	kg
Lift capacity at maximum lift height	kg
Reach fully raised	m
Maximum forward reach	m
Height with max load (4300/4500 kg)	m
Breakout force	daN
Operating weight	kg

ENGINE

Make CNH and model	
Type	
Total displacement	l
Net flywheel power (ISO 14396)	kW/hp
Maximum torque	Nm

TRANSMISSION

Type	
Forward/Reverse speeds	
Maximum speed on road**	km/h

** Max. speed limited according to the country's legislations

HYDRAULIC SYSTEM

Type	
Hydraulic controls	
Simultaneous movement	
Hydraulic pump	
Hydraulic flow	l/min
Hydraulic pressure	bar

CAPACITIES

Fuel tank	l
Hydraulic tank	l

TYRES

13.00 x 24	<u>GOOD-YEAR</u>
15.5 x 25	<u>MICHELIN</u>
405/70 x 24	<u>MITAS</u>
400/80 x 24	<u>DUNLOP</u>

TX170-45

	with stab. up	with stab. down
Maximum lift capacity (at 500 mm from fork heel)	4000	4500
Maximum lift height	16.24	16.60
Lift capacity at maximum reach	-	450
Lift capacity at maximum lift height	700	3000
Reach fully raised	2.00	1.00
Maximum forward reach	12.54	12.54
Height with max load (4300/4500 kg)	7.40	7.95
Breakout force	7750	7750
Operating weight	12300	12300

4TAA 4.5

Turbo/intercooler

4.5

82/110

480 @ 1400 rpm

PowerShift

4/3

35

Load Sensing

Servo

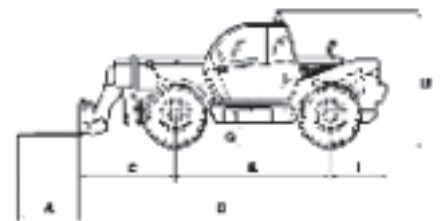
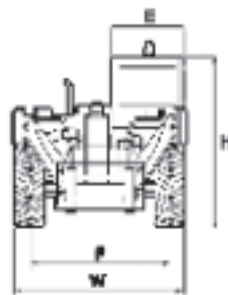
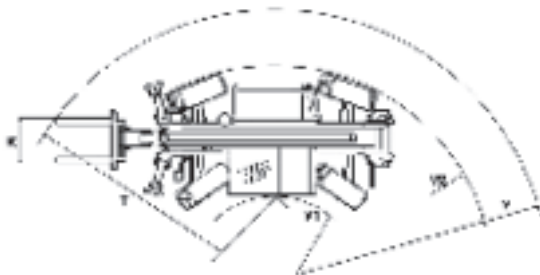
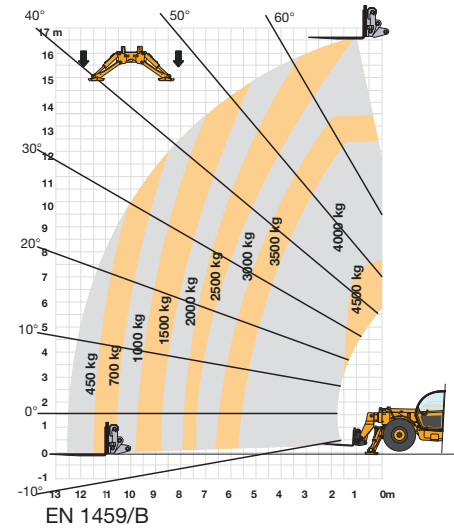
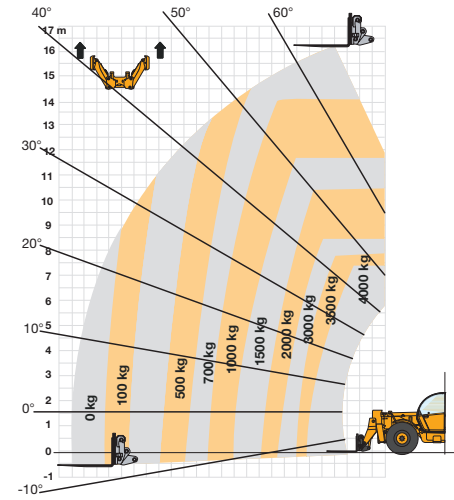
yes

gear

115

240

TX170-45



DIMENSIONS

(with MITAS 405/70x24)

mm	A	B	C	D	E	F	G	H	I	K	T	U	V	V ₁	V ₂	W
	1200	3120	1902	6135	1000	2050	402	2450	1100	1260	4598	2730	5445	980	3890	2445



SERVICE & SUPPORT THE CASE DEALER YOUR PROFESSIONAL PARTNER

World-class construction equipment is just the start with Case. Your local Case dealer is a total solutions provider. Look to Case dealers to help find the right size machine, attachments and options to meet the demands of your job.

Case dealers help you maximise machine uptime and profitability. That means you can focus on the job, knowing your Case dealer is never far away. Case dealers stand behind the equipment they sell, with skilled service technicians fully equipped to resolve your maintenance and repair issues and, the support of a global parts network, recognised as second to none in the industry.

But it doesn't stop there. Through CNH Capital, your local Case dealer offers flexible financing options, leasing packages and insurance services to protect your investment.

When you need more than just equipment, Case dealers deliver. More.



WORLDWIDE CASE CONSTRUCTION EQUIPMENT CONTACT INFORMATION

EUROPE/AFRICA/MIDDLE EAST:

CENTRE D'AFFAIRES EGB
5, AVENUE GEORGES BATAILLE - BP 40401
60671 LE PLESSIS-BELLEVILLE - FRANCE

NORTH AMERICA/MEXICO:

700 STATE STREET
RACINE, WI 53404 U.S.A.

LATIN AMERICA:

AV. GENERAL DAVID SARNOFF 2237
32210 - 900 CONTAGEM - MG
BELO HORIZONTE BRAZIL

ASIA PACIFIC:

UNIT 1 - 1 FOUNDATION PLACE - PROSPECT
NEW SOUTH WALES - 2148 AUSTRALIA

CHINA:

No. 29, INDUSTRIAL PREMISES, No. 376,
DE BAO ROAD, WAIGAOQIAO FTZ, PUDONG,
SHANGHAI, 200131, P.R.C.

NOTE: Standard and optional fittings can vary according to the demands and specific regulations of each country. The illustrations may include optional rather than standard fittings - consult your Case dealer. Furthermore, CNH reserves the right to modify machine specifications without incurring any obligation relating to such changes.

CNH UK Ltd.

Armstrong House
The Fingleton Estate
Hayfield Lane
Doncaster
DN9 3XA
Fax +44 (0)1302 802126

Conforms to directive 98/37/CE



www.casece.com

CASE
PROFESSIONAL PARTNER