

R

SERIES 2

BACKHOE LOADERS

695 Super R

CASE



P R O F E S S I O N A L P A R T N E R

ENGINE

695 Super R Series 2

Make & type	CASE Family III Turbocharged with intercooling
Model	445TA/M2
Max. power ISO TR 14396	110 hp (82 kW)
Nominal rating under load	2200 rpm
Max. torque	480 Nm
Rating at max. torque	1400 rpm
Displacement	4485 cm ³
N° of cylinders	4
Bore and stroke	104 x 132 mm
Injection system	Direct
Oil filter	Full flow, screw-type cartridge
Air filter (dry-type)	2 elements

The engine conforms to 97/68/CE Tier 2 specifications.



CAB

The spacious and expansively glazed cab offers a panoramic view over the front and rear working areas.

The 695 Super R Series 2 is now offered with optional, hydraulic backhoe pilot controls. The low-effort, joystick controls are incorporated into dual, chassis-mounted towers.

The fully adjustable control lever towers (sideways / backwards & forwards) ensure a comfortable working position for all types and sizes of operators. For safety the pilot controls can be disconnected. If required, the control systems can be switched between backhoe and excavator patterns to suit all operators. The controls are ergonomically placed both for the loader and the backhoe, so that the operator can coordinate equipment and travel movements with ease. The cab structure is certified ROPS/FOPS under ISO 3471 and SAE 3449. Entry is through two wide doors and non-slip steps. Two control consoles group the vital functions of the machine allowing on-going monitoring regardless if working as a loader or as a backhoe. The steering column is adjustable for improved driver comfort.

Sound levels: Internal LpA 77 (dBA), External LwA 105 (dBA).

NEW TILTING HOOD

The engine tilting hood is easy to open thanks to 2 handles on the left side for quicker maintenance.

It is possible to check engine oil from ground level before starting the engine as well as all checking points.

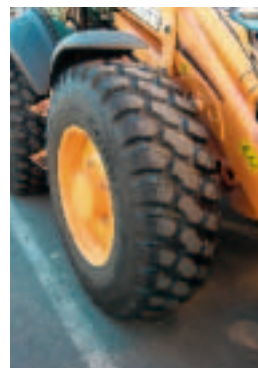
To prevent vandalism, the bonnet latch has been placed inside the cab.



TYRES

Standard for general use	16.9 x 24 R4 12 PR ISG GY
Optional for industrial use on hard ground	440/80 R28 IT530 GY
Optional for high grip	440/80 R28 IT520 GY

With 4 large, equal diameter wheels, 4-wheel-drive is continuously available. The choice of tyres covers the widest range of ground conditions, and all of the traction is fully transmitted to the ground, guaranteeing the best performance at each cycle. Very good ground clearance allows obstacles to be driven over without the risk of damaging the transmission.



AXLES

OSCILLATING FRONT AXLE

Make	Carraro
Type	26.28
Oscillation	16 °
Engagement of front axle drive	Electric
Steering angle	22°/22°

FIXED REAR AXLE

Make	Carraro
Type	26.32 M
Steering angle	22°/22°



ELECTRICAL SYSTEM

Voltage	12 Volts
Battery	2 x 12 V x 95 Amp./h
Alternator	90 Amperes



“POWERSHIFT” TRANSMISSION

Make	Clark
Type	PowerShift
Speeds	4 F / 2R
Maximum travel speeds	
Fwd. 1st, 2nd, 3rd and 4th	6.2, 11.8, 23.4 and 41.4 km/h
Rev. 1st and 2nd	7.5 and 14 km/h
Stall ratio of torque converter	2.31 : 1

Choice of two operational modes, “manual” or “automatic”, of the “PowerShift” box by simply pressing a button on the front dashboard. The forward/reverse shuttle lever is ergonomically located on the left under the steering wheel. Smooth gear changes on the move provide better operator comfort, improved transmission service life and faster cycles. The transmission control lever integrates the display of the selected speed and an outstanding electronic autodiagnostic system which dramatically reduces maintenance time.



STEERING

Assured manoeuvrability for any type of jobsite or for travelling on the road. The switch for the steering mode offers three positions, indicated by illuminated warning lights.

- The “highway” position
- The “4-wheel steer” position
- The “crab” steer position

MINIMUM TURNING RADIUS

At corner of 4 x 1 bucket	5.32 m
At outside of the front tyre	4.52 m



HYDRAULIC SYSTEM

Type of pump	Gear pump
Number of bodies	2
Max. flow	160 L/mn
Main relief setting max.	210 bar
Filtration	10 µ

The hydraulic circuit combines the simplicity and sturdiness of a twin gear pump with the ease of utilisation of a “load sensing” circuit with flow compensation. Work can be carried out in the most severe conditions and all of the hydraulic functions can be combined regardless of the load, without the operator needing to have any special aptitude or dexterity.

On the “Pilot version” an optional additional valve, which features a proportional control, is now available for special attachments (e.g. Auger).

LOADER

The loader is provided with two automatic functions:

- Float position
- Automatic return to dig

These functions bring about a very distinct improvement in operator productivity, with the operator only having to concentrate on manoeuvring his loader and on the safety of his surroundings (faster cycles).

Loading application is improved by the transmission disconnect switch which is transferring full engine power to hydraulic system.

BACKHOE

The boom and swing valves are equipped as standard with hydraulic cushioning at the end of the stroke, preventing mechanical shock loads on the structures and enhancing hydraulic cylinder life.



CAPACITIES

Fuel tank	135 l
Hydraulic tank	70 l
Total hydraulic circuit	118 l
Engine oil	13 l
Fuel tank	24 l
Transmission	18 l
Front axle	10 l
Rear axle	10 l

BRAKES

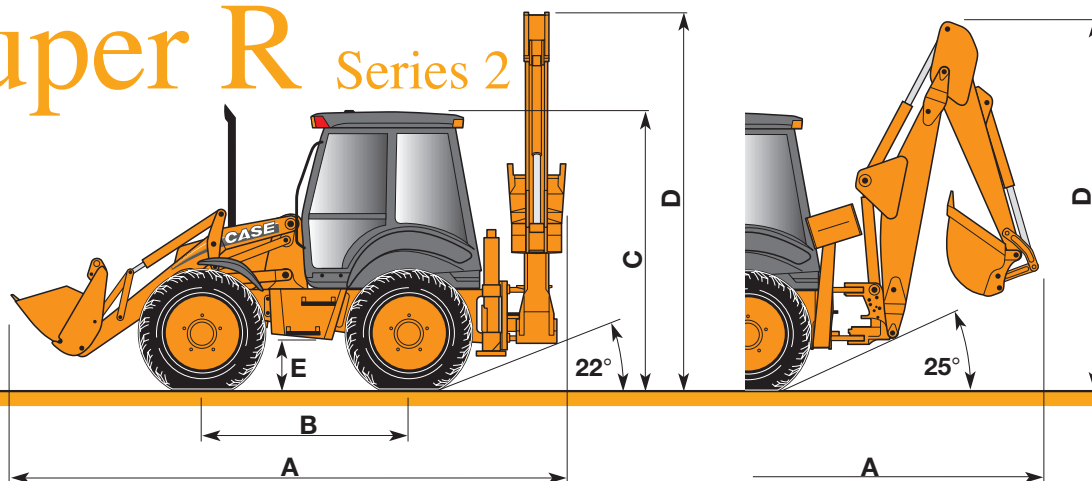
Multi-disc, oil-immersed service brakes on the rear wheels, together with automatic engagement of the front wheel drive, ensure optimum safety in all travel conditions.

QUICK COUPLER

New outstanding feature.
The very simple but extremely effective CASE mechanical Quick Coupler is offered as standard equipment.



695 Super R Series 2



GENERAL DIMENSIONS

	Side-shift	Axial
A Overall length	5.75 m	7.13 m
B Wheelbase	2.20 m	2.20 m
C Height of cab	2.90 m	2.90 m
D Height of boom in transport position	3.95 m	3.95 m
E Ground clearance	0.45 m	0.45 m
Overall width	2.40 m	2.40 m

BUCKETS

LOADER

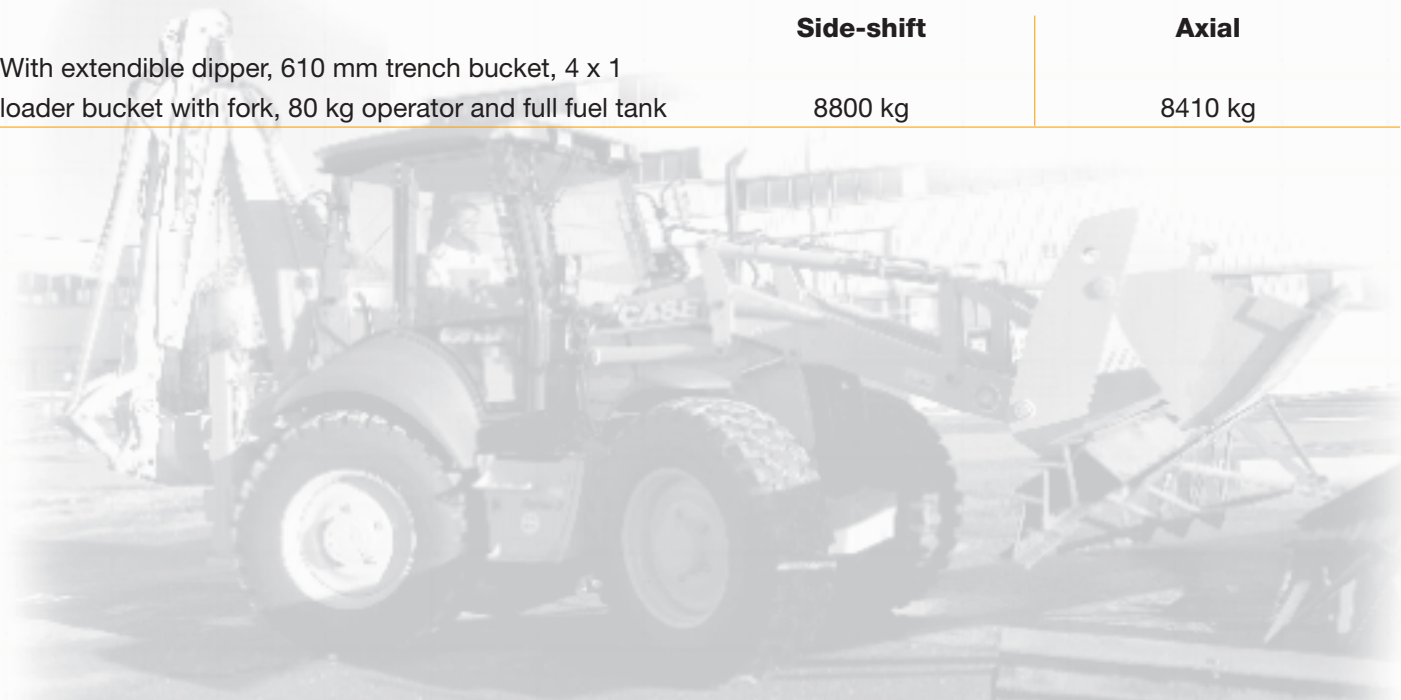
		Earthmoving	4 x 1	4 x 1 with forks
Capacity	l	1200	1200	1200
Weight	kg	435	830	990
Width	m	2.40	2.40	2.40

BACKHOE

Width	mm	279	305	406	457	610	762	914
Capacity	l	73	80	100	120	180	240	310
Weight	Kg	88	140	160	165	195	225	260

WEIGHT

	Side-shift	Axial
With extendible dipper, 610 mm trench bucket, 4 x 1 loader bucket with fork, 80 kg operator and full fuel tank	8800 kg	8410 kg



LOADER AND BACKHOE PERFORMANCES

LOADER (with R28 tyres)

		BUCKET TYPE		
		Earthmoving 1.2 m ³	4 x 1 1.2 m ³	4 x 1 with forks 1.2 m ³
A Overall loadover height	m	4.35	4.46	5.00
B Digging depth with bucket horizontal	mm	85	90	90
C Hinge pin height	m	3.52	3.52	3.52
D Dump clearance with bucket at 45°	m	2.74	2.74	2.74
E Reach at full height with bucket at 45°	m	0.75	0.72	0.72
F Bucket roll-back angle (on ground)		45°	45°	45°
G Bucket roll-back angle maximum height		36.5°	47°	47°
Breakout force - (lift cylinder)	daN	7400	7400	7400
Breakout force - (bucket cylinder)	daN	5520	5500	5500
Max. lift capacity	kg	4770	4580	4500
Lift capacity to full height	kg	3500	3075	3075

The extremely sturdy construction of the loader arms and the reinforcements at the anchorage points for the hydraulic cylinders allow a high level of performance to be achieved.

The loader is equipped as standard with a mechanical bucket self-levelling system in order to prevent loss of material loaded and to facilitate handling work using pallet forks.



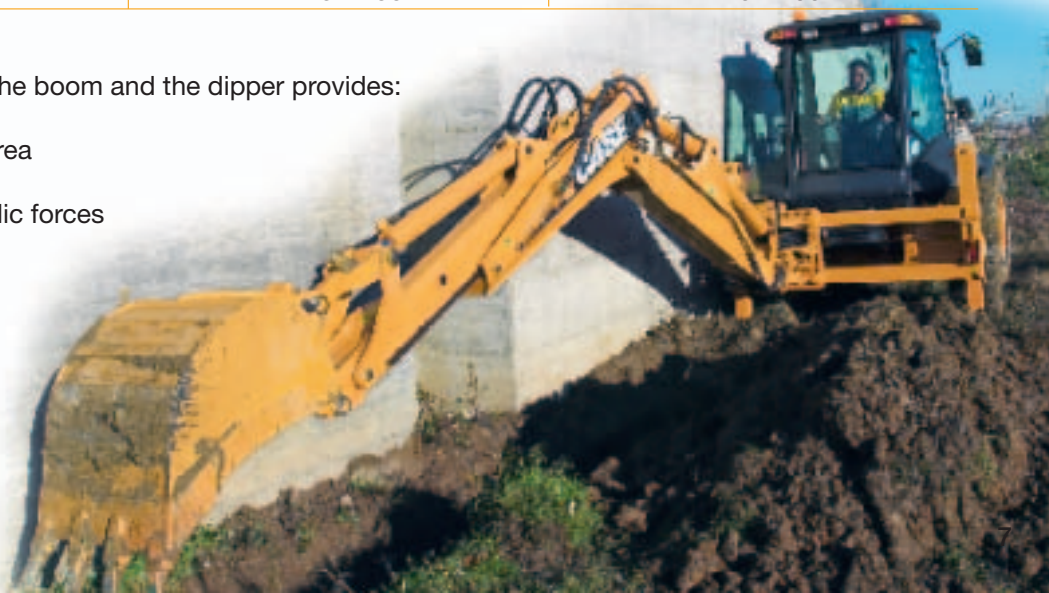
BACKHOE

		SIDE SHIFT VERSION WITH QUICK COUPLER			AXIAL VERSION WITH QUICK COUPLER		
		STANDARD DIPPER	EXTENDIBLE DIPPER		STANDARD DIPPER	EXTENDIBLE DIPPER	
			Retracted	Extended		Retracted	Extended
Swinging angle		180°	180°		180°	180°	
G Max. dig depth	m	4.62	4.62	5.81	4.71	4.71	5.90
H Max. reach from swing centre	m	5.90	5.90	6.99	5.99	5.99	7.08
J Max. operating height	m	5.81	5.81	6.49	5.91	5.91	6.58
K Max. loading height	m	3.93	3.93	4.62	3.89	3.89	4.54
L Maximum reach from rear axle	m	7.23	7.23	8.32	7.32	7.32	8.50
M Reach at maximum loading height	m	1.90	1.90	2.84	1.86	1.86	2.80
Side shift off-setting from machine centreline	m	0.62	0.62	0.62	0.62	0.62	0.62
Lift capacity at max. outreach	kg	1610	1475	1125	1545	1410	1055
Breakout force - bucket cylinder	daN	5600	5600		4920	4920	
Digging force - dipper cylinder	daN	3744	3775	2643	3629	3629	2580
Bucket rotation*	°	162-200			162-200		

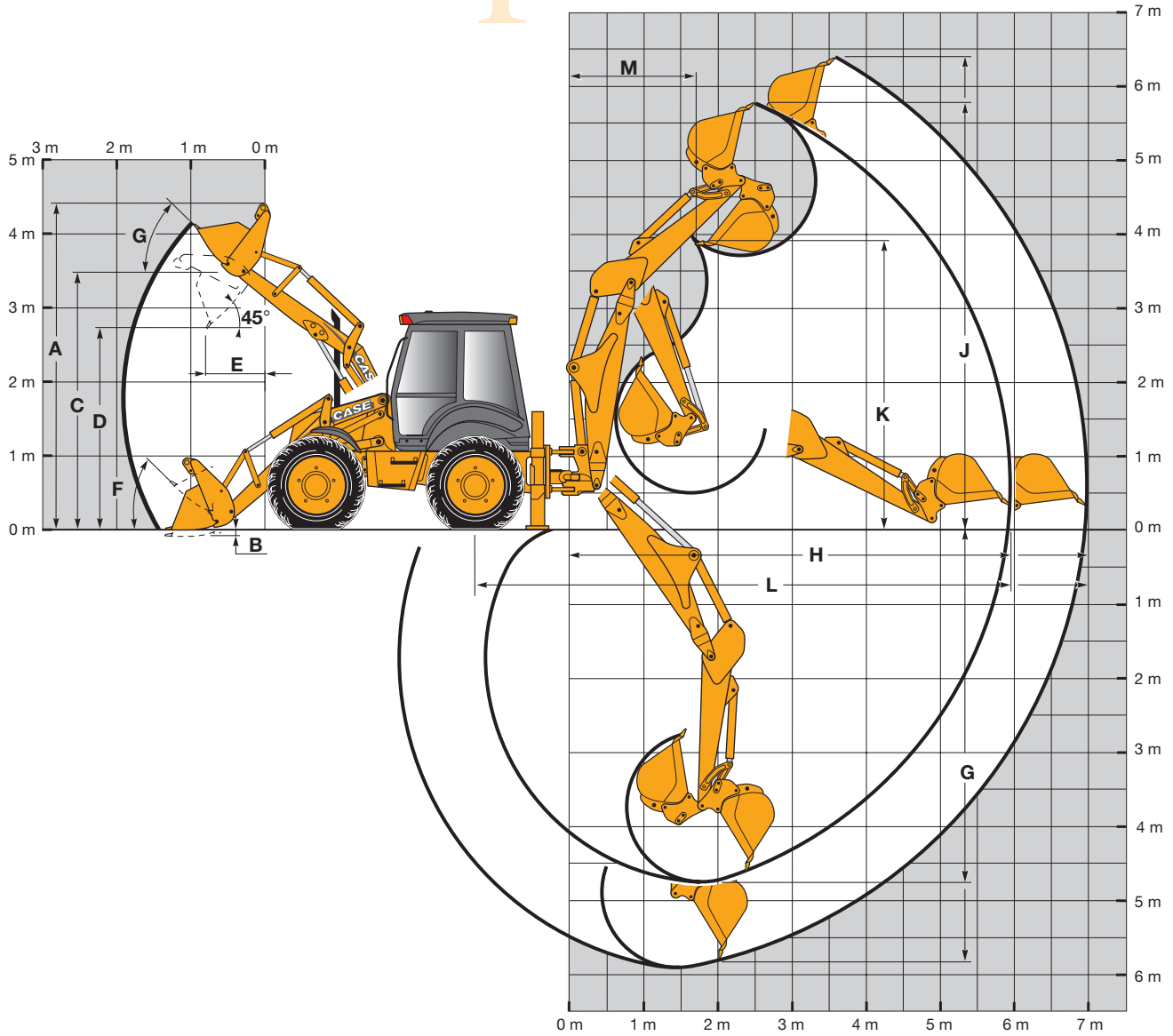
*Force - speed bucket hole

The narrow box structure design of the boom and the dipper provides:

- Excellent visibility over the work area
- High structural strength
- Maximum utilisation of the hydraulic forces generated by the cylinders.



695 Super R Series 2



695 Super R Series 2

STANDARD EQUIPMENT

- Mechanical quick-coupler
- Reversing audible alarm
- Loader arm safety strut
- Steering wheel spinner knob
- Heating and defrosting
- Battery isolation
- Cold starting equipment
- ISO pattern layout of backhoe controls
- Rotating beacon
- Noise insulation meeting European standards
- Sun visor
- Working lights front and rear
- Loader bucket automatic return to dig
- Pneumatic suspension seat

OPTIONS

- Air conditioning
- Ride control system (anti pitching)
- De-luxe spring suspension seat with belt and elbow rests
- Limited slip differential
- Auxiliary hydraulic circuit for the backhoe
- R28 tyres
- SAE pattern backhoe controls or X pattern
- Extendible dipper
- Double batteries 95A/900CCA
- Auxiliary circuit for operating hydraulic hammers
- Remote battery terminals
- Safety valves for the stabiliser cylinders

Standard and optional equipment can vary by country.



SERVICE & SUPPORT
THE CASE DEALER
YOUR PROFESSIONAL PARTNER



NOTE: Standard and optional fittings can vary according to the demands and specific regulations of each country. The illustrations may include optional rather than standard fittings - consult your Case dealer. Furthermore, CNH reserves the right to modify machine specifications without incurring any obligation relating to such changes.

CNH UK Ltd.
Armstrong House
The Finningley Estate
Hayfield Lane
Doncaster
DN9 3XA
Fax +44 (0)1302 802126

WORLDWIDE CASE CONSTRUCTION EQUIPMENT CONTACT INFORMATION

EUROPE/AFRICA/MIDDLE EAST:

CENTRE D'AFFAIRES EGB
5, AVENUE GEORGES BATAILLE - BP 40401
60671 LE PLESSIS-BELLEVILLE - FRANCE

NORTH AMERICA/MEXICO:

700 STATE STREET
RACINE, WI 53404 U.S.A.

LATIN AMERICA:

AV. GENERAL DAVID SARNOFF 2237
32210 - 900 CONTAGEM - MG
BELO HORIZONTE BRAZIL

ASIA PACIFIC:

UNIT 1 - 1 FOUNDATION PLACE - PROSPECT
NEW SOUTH WALES - 2148 AUSTRALIA

CHINA:

No. 29, INDUSTRIAL PREMISES, No. 376.
DE BAO ROAD, WAIGAOQIAO FTZ, PUDONG,
SHANGHAI, 200131, P.R.C.

Conforms to directive 98/37/CE



www.casece.com

CASE
PROFESSIONAL PARTNER